



# MONTHLY MEMBERSHIP PROGRESS REPORT

Results as of: 4/30/2015

Multiple District 2

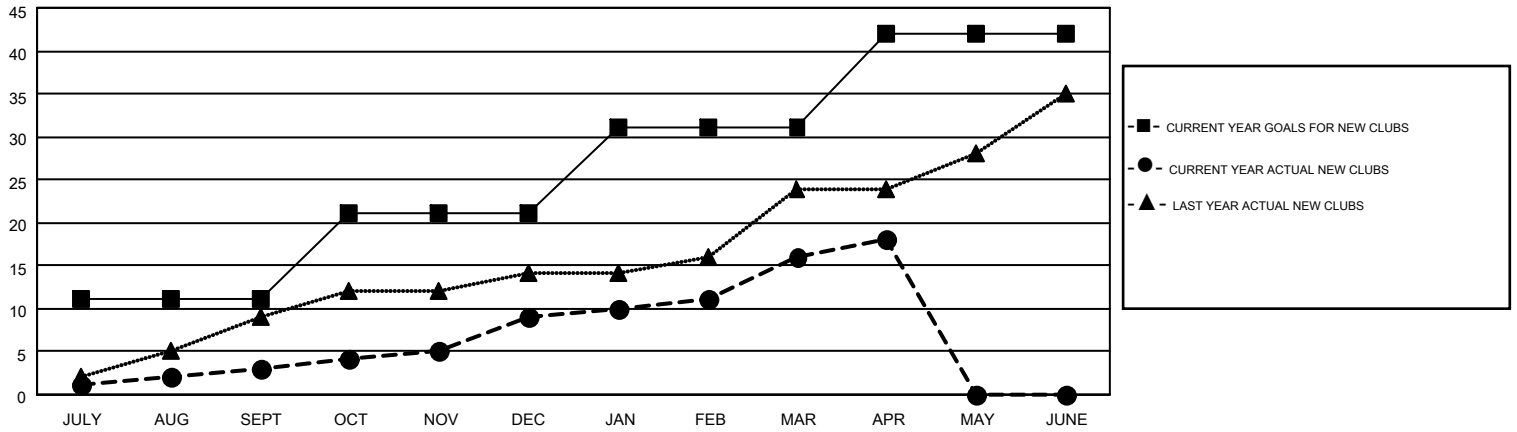
LOCATION: TEXAS

GMT: HAL GRIFFIN

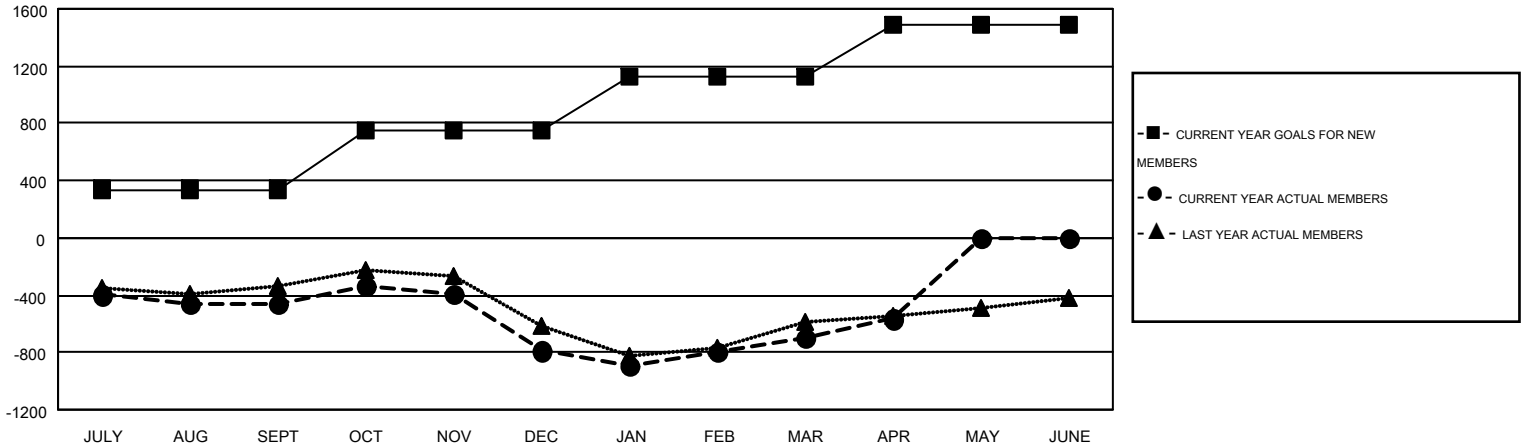
GMT CA 1

Clubs					Members				
RESULTS FOR 2014-2015					RESULTS FOR 2014-2015				
QUARTER	NEW CLUB GOAL	NEW CLUBS	DROPPED CLUBS	NET GAIN/LOSS	QUARTER	NEW MEMBER GOAL	CHARTER AND NEW MEMBERS ADDED	DROPPED MEMBERS	NET GAIN/LOSS
JULY/AUG/SEPT	11	3	9	-6	JULY/AUG/SEPT	339	932	1,389	-457
OCT/NOV/DEC	10	6	17	-11	OCT/NOV/DEC	408	1,041	1,373	-332
JAN/FEB/MAR	10	7	8	-1	JAN/FEB/MAR	377	1,199	1,104	95
APR/MAY/JUNE	11	2	0	2	APR/MAY/JUNE	368	390	262	128

GOALS AND ACTUAL NEW CLUBS CUMULATIVE



GOALS AND ACTUAL MEMBERS CUMULATIVE



DROPPED CLUBS: 34	598 CLUBS OF 924 ADDED 1 OR MORE NEW MEMBERS	<u>GENDER DISTRIBUTION</u>	
<u>DROPPED MEMBERS</u>		MALE	17,569 (67.28%)
DECEASED	295	FEMALE	8,543 (32.72%)
CLUB CANCELLED	316	<u>FAMILY UNIT MEMBERS</u> 3,912	
OTHER	3,517	<u>HEAD OF HOUSEHOLD</u> 1,917	
TOTAL	4,128	<u>NON-HEAD OF HOUSEHOLD</u> 1,995	

[CLICK HERE FOR HEALTH ASSESSMENT DATA](#)